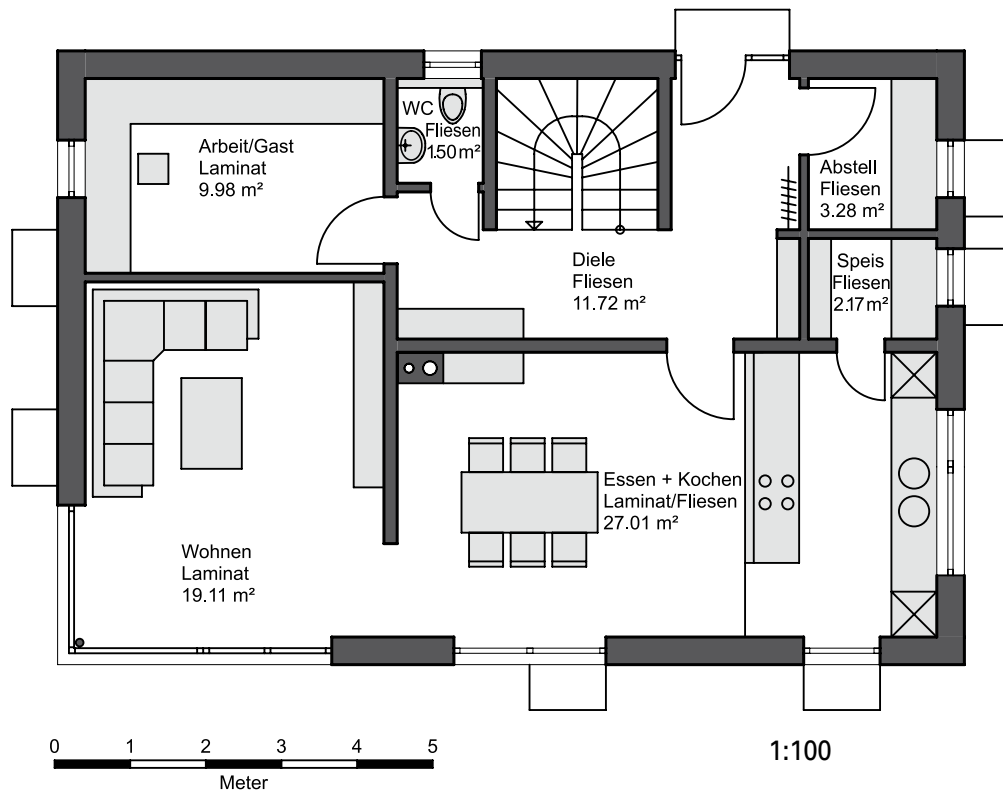




[ TYPENHAUS : **PASSAU** ]



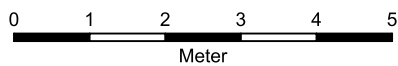
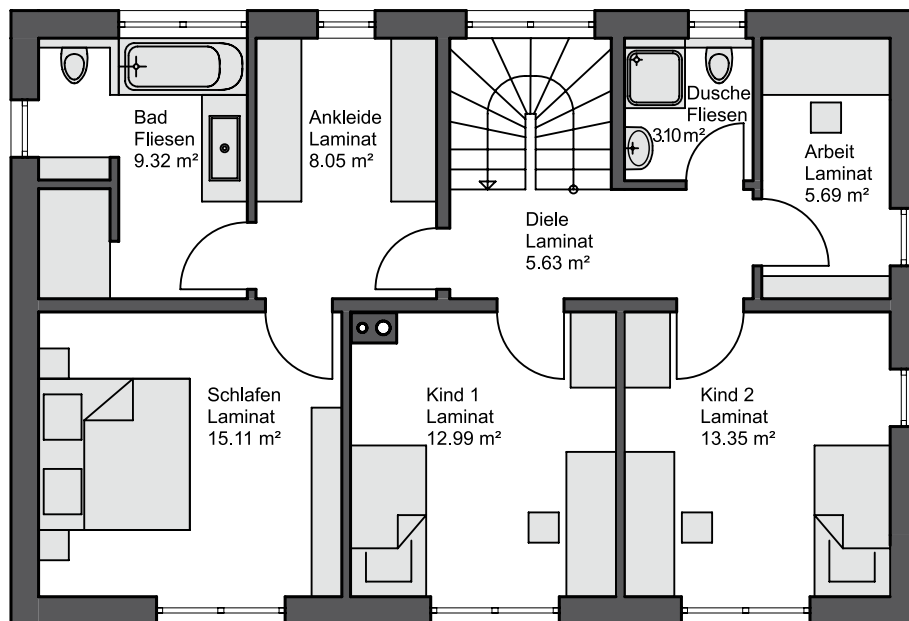
# [ ERDGESCHOSS ]



# [ PASSAU ]



# [ DACHGESCHOSS ]

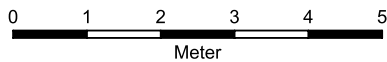
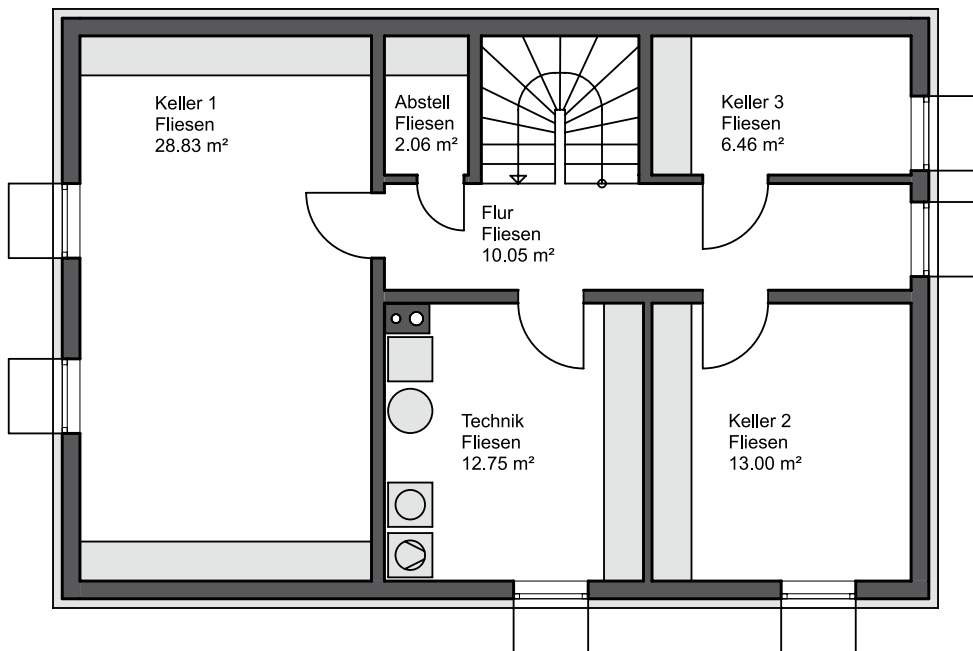


1:100

|               |                       |
|---------------|-----------------------|
| Wohnfläche    | 148,04 m <sup>2</sup> |
| Nutzfläche    | 73,15 m <sup>2</sup>  |
| Außenmaße     | 8,115 x 11,99         |
| Dachneigung   | 18 °                  |
| umbauter Raum | 902,84 m <sup>3</sup> |

ENERGIESPAREND - HOCHWERTIG - KURZE BAUZEITEN - TERMINGERECHT - FESTPREISGARANTIE

# [ UNTERGESCHOSS ]



1:100

