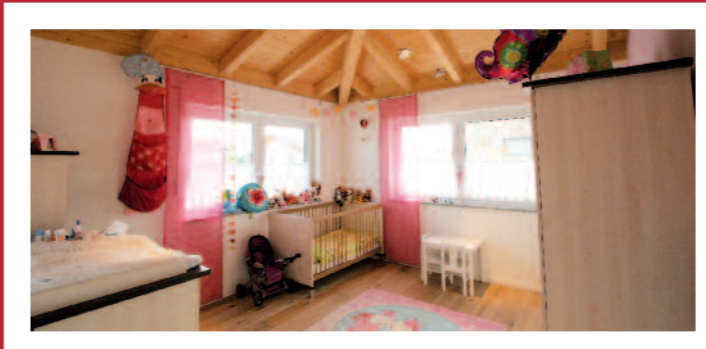
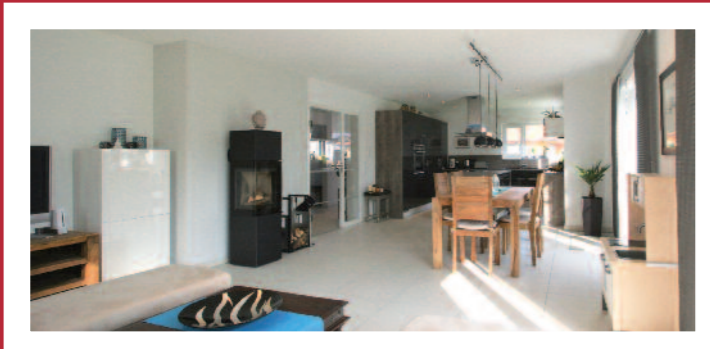


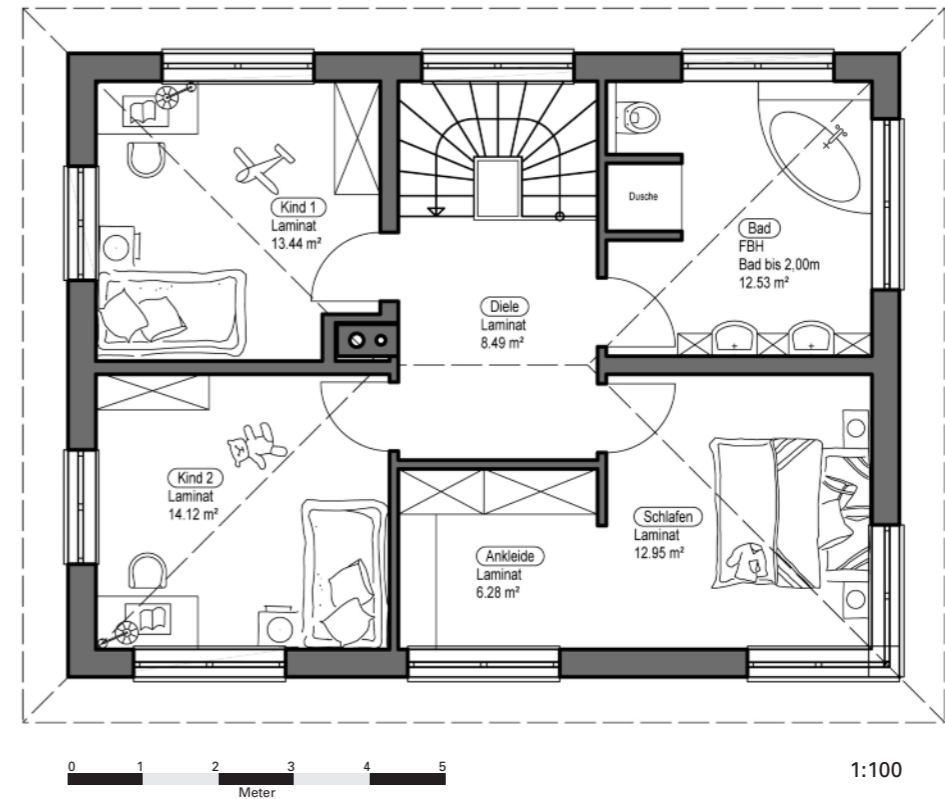
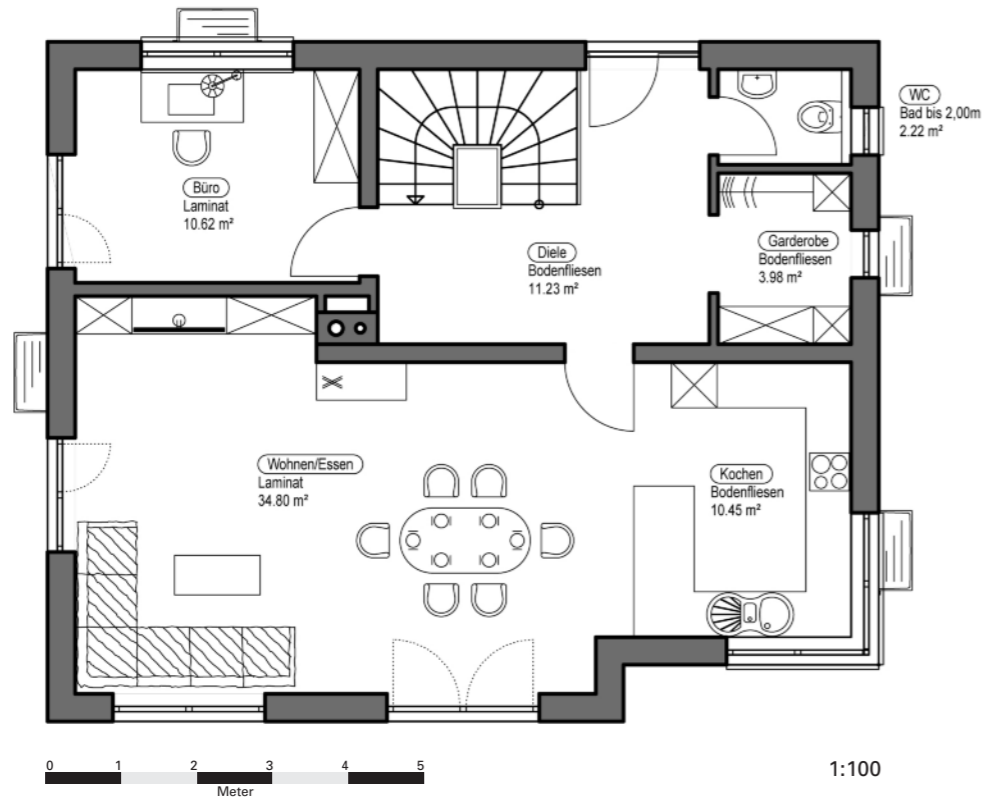


[TYPENHAUS : STRAUBING]

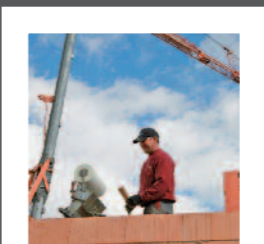
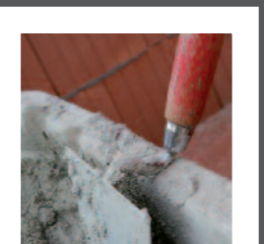
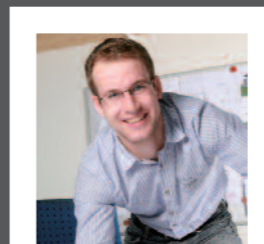


[ERDGESCHOSS]

[DACHGESCHOSS]



[STRAUBING]



Wohnfläche	138,37 m ²
Nutzfläche	71,38 m ²
Außenmaße	10,99 x 8,24
Kniestock	2,57 m
Dachneigung	18 °

ENERGIESPAREND - HOCHWERTIG - KURZE BAUZEITEN - TERMINGERECHT - FESTPREISGARANTIE

[UNTERGESCHOSS]

