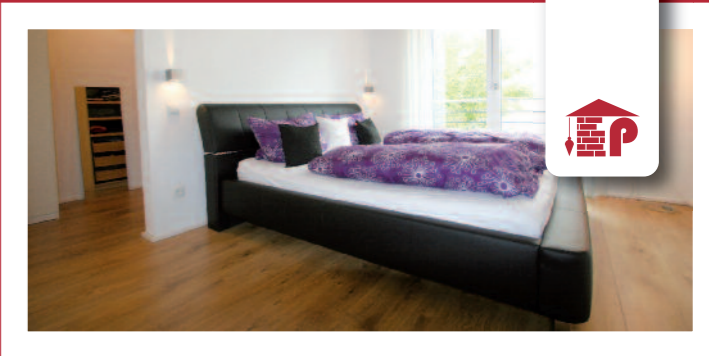
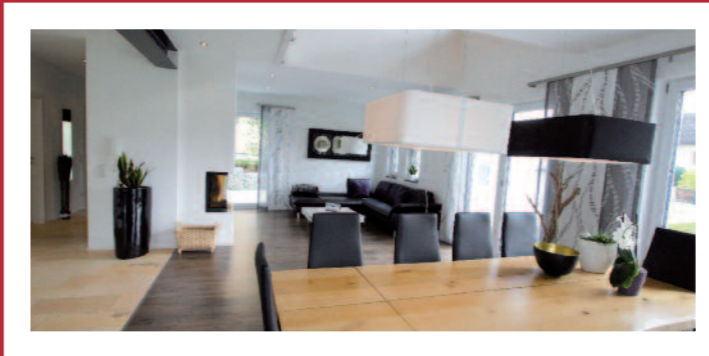
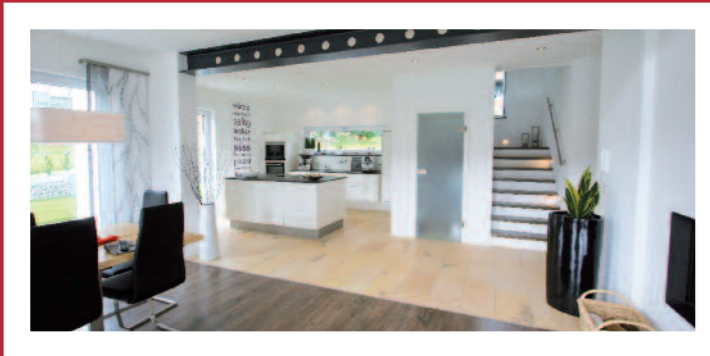
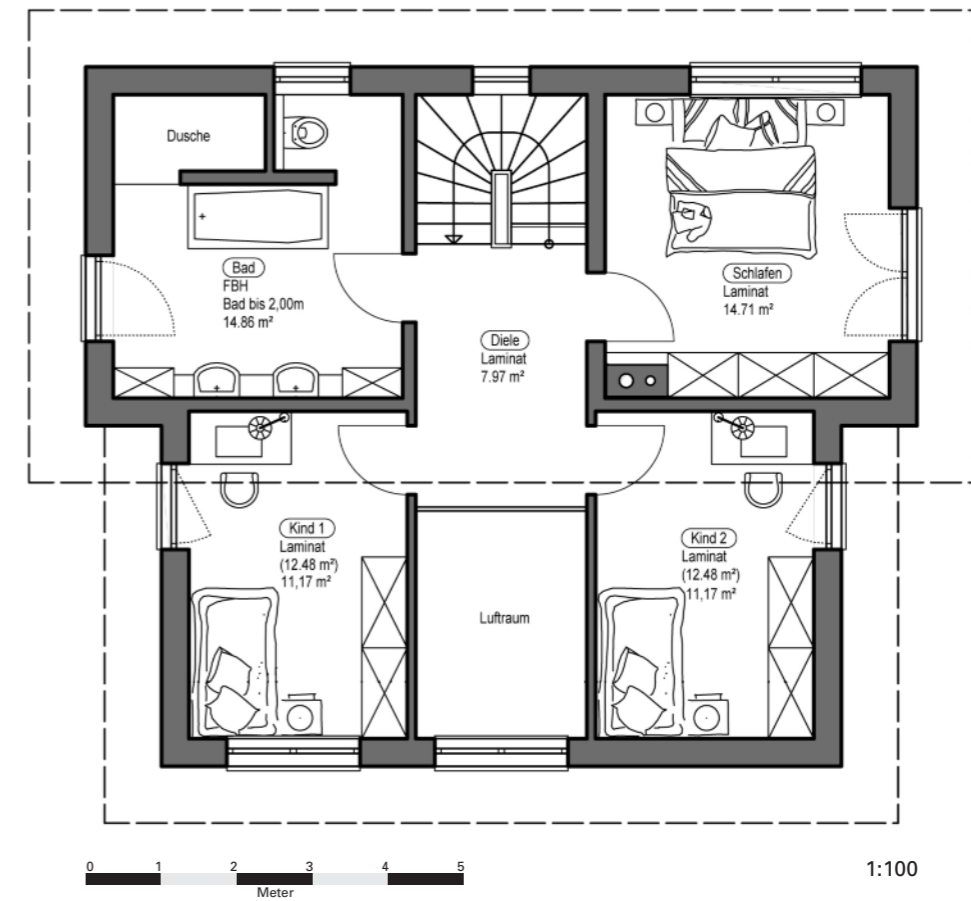
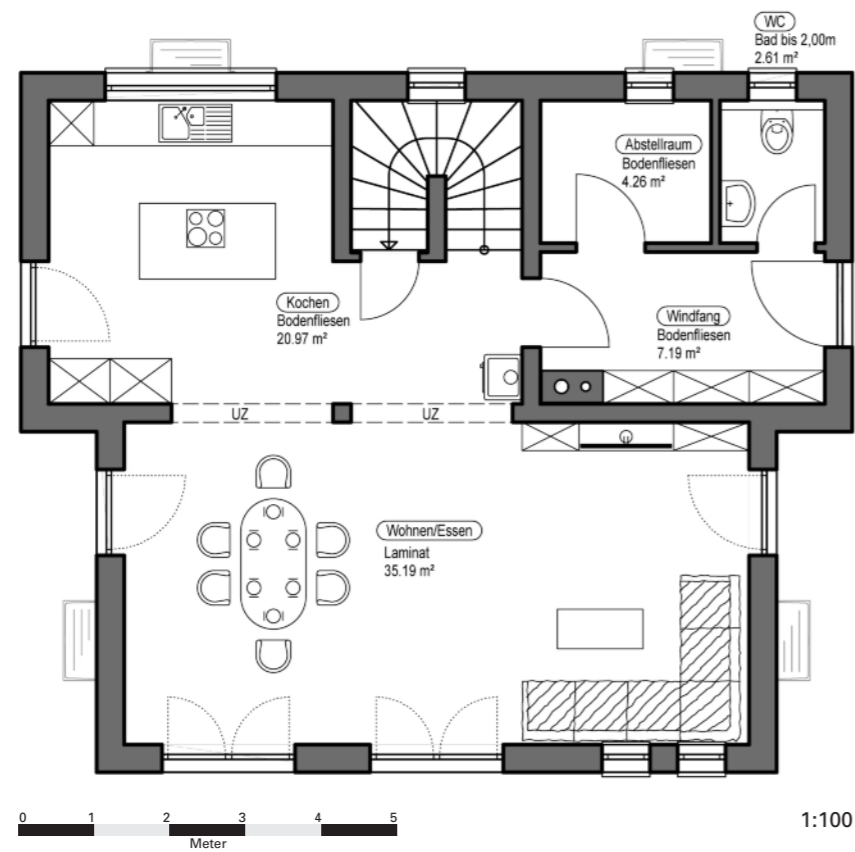


[TYPENHAUS : SALZWEG]

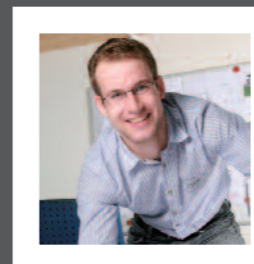


[ERDGESCHOSS]

[DACHGESCHOSS]



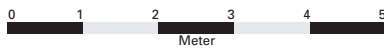
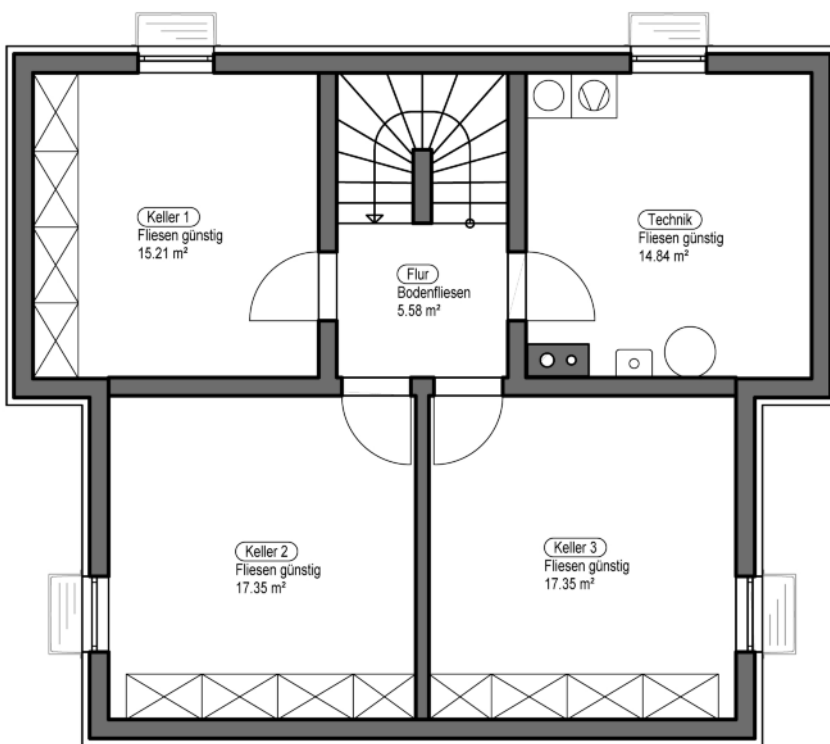
[SALZWEG]



Wohnfläche	128,20 m ²
Nutzfläche	68,22 m ²
Außenmaße	10,99 x 9,24
Kniestock	1,77 m
Dachneigung	28 ° und 25 °

ENERGIESPAREND - HOCHWERTIG - KURZE BAUZEITEN - TERMINGERECHT - FESTPREISGARANTIE

[UNTERGESCHOSS]



1:100

